

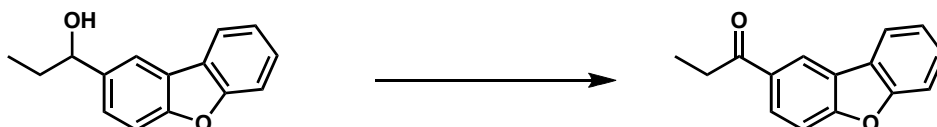
Chem 41c Quiz 3

Stoltz, Spring 2008
April 18, 2008

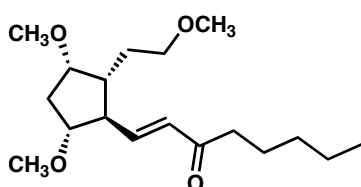
You have 25 min to take this quiz. It is closed note, closed book, and no collaboration is allowed. Please do not discuss the quiz with anyone until you receive it back graded. Place a box around your answers. There is no partial credit.

Predict the major product (if any) or reagents needed in the following reactions: (5 points each)

1.

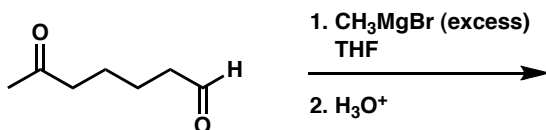


2.

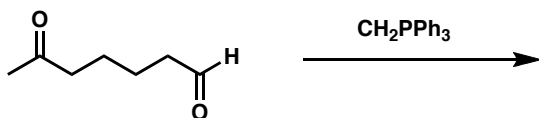


hint: 2 products in a 1:1 ratio

3.

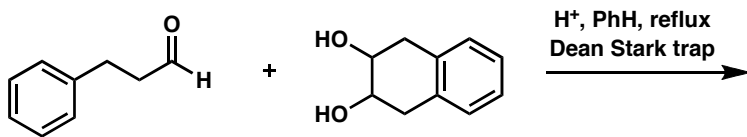


4.



Bonus (10 points)

Predict the product and provide a mechanism for the following reaction. (partial credit will be granted)



<http://www.ktf-split.hr/periodni/en/>

(1) Pure Appl. Chem., 73, No. 4, 667-683 (2001)
Relative atomic mass is shown with five significant figures. For elements having no stable nuclides, the value enclosed in brackets indicates the mass number of the longest-lived isotope of the element.
However three such elements (Th, Pa, and U) do have a characteristic terrestrial isotopic composition, and for these an atomic weight is tabulated.

LANTHANIDE

Copyright © 1998-2002 EnGk, [en@xif-apit.hr]

57 138.91	58 140.12	59 140.91	60 144.24	61 (145)	62 150.36	63 151.96	64 157.25	65 158.93	66 162.50	67 164.93	68 167.26	69 168.93	70 173.04	71 174.97
La	Ce	Pr	Nd	Pm	Sm	Eu	Gd	Tb	Dy	Ho	Er	Tm	Yb	Lu
LANTHANUM	CERIUM	PRASEODYMIUM	NEODYMIUM	PROMETHIUM	SAMARIUM	EUROPIUM	GADOLINIUM	TERBIUM	DYSPROSIUM	HOLMIUM	ERBIDIUM	THULIUM	YTTERBIUM	LUETIUM

ACTINIDE

89 (227)	90 232.04	91 231.04	92 238.03	93 (237)	94 (244)	95 (243)	96 (247)	97 (247)	98 (251)	99 (252)	100 (257)	101 (258)	102 (259)	103 (262)
Ac	Th	Pa	U	Np	Pu	Am	Cm	Bk	Cf	Es	Fm	Md	No	Lr
ACTINIUM	THORIUM	PROTACTINIUM	URANIUM	NEPTUNIUM	PLUTONIUM	AMERICIUM	CURIUM	BERKELIUM	CALIFORNIUM	EINSTEINIUM	FERMITIUM	MENDELVIUM	NOBELIUM	LAWRENCEIUM