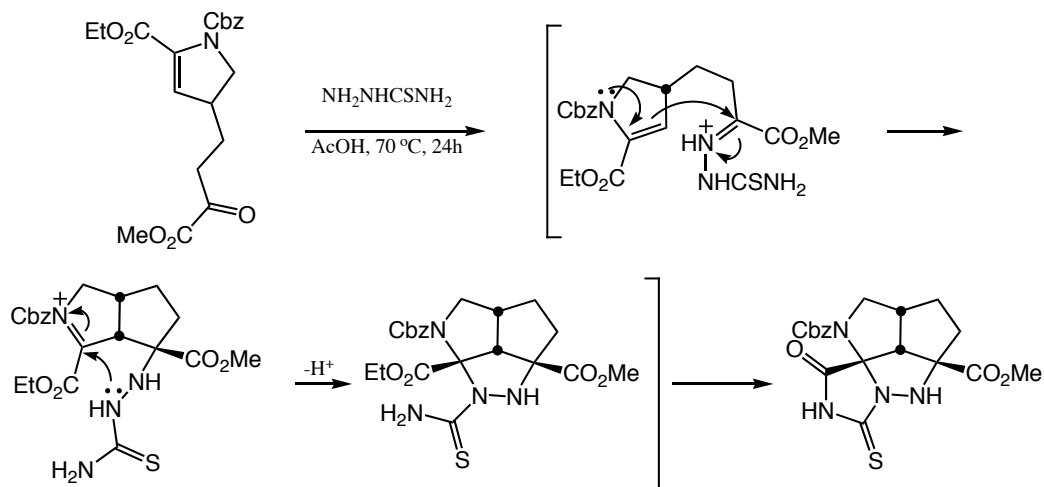
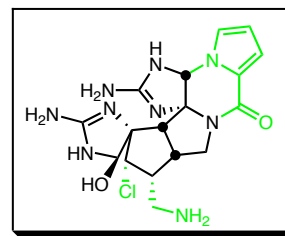
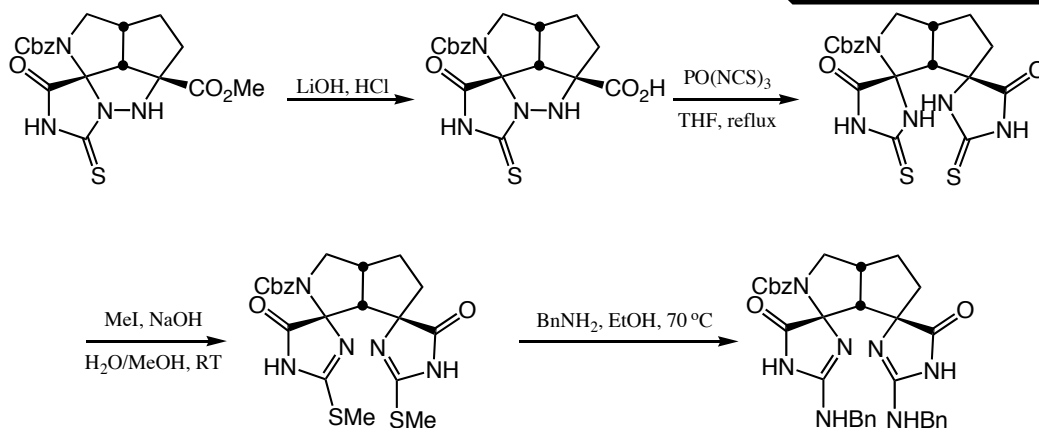
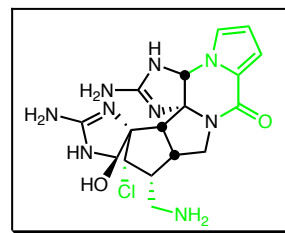


Overman's Stereocontrolled Synthesis of the Tetracyclic Palau'amine Core



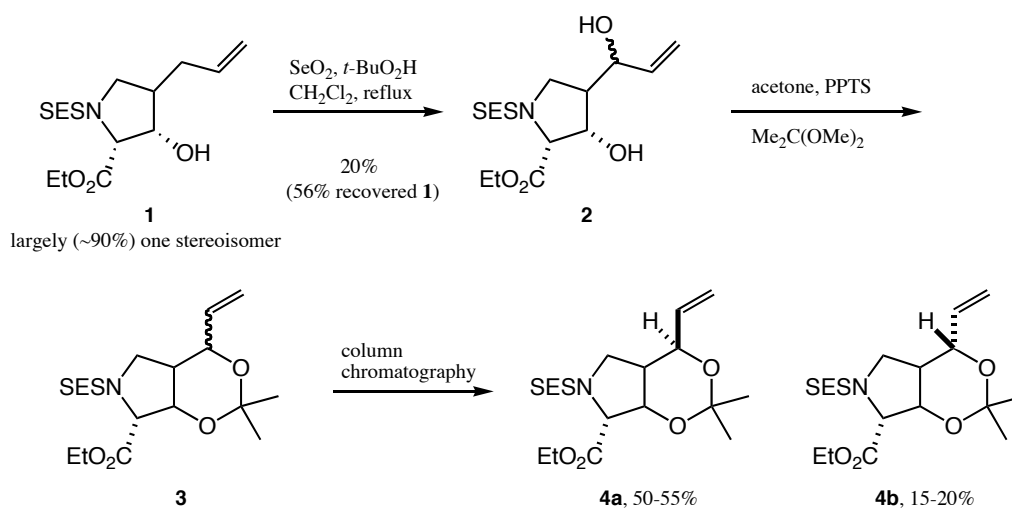
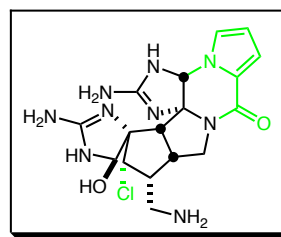
Overman, L.E. *et. al.*, *J. Am. Chem. Soc.* **1997**, *119*, 7159-7160.

Overman's Stereocontrolled Synthesis of the Tetracyclic Palau'amine Core



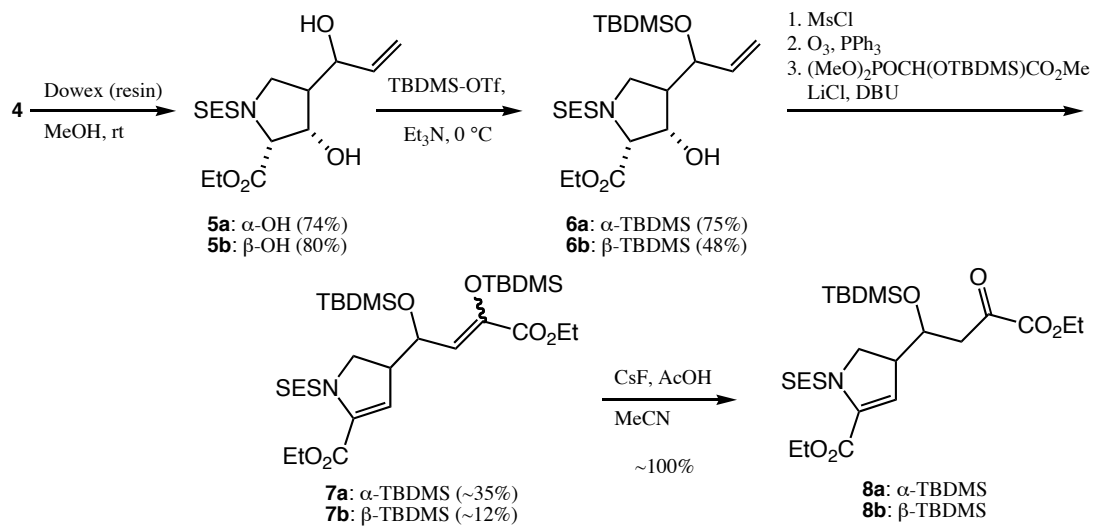
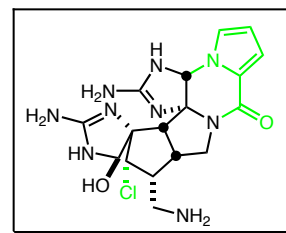
Overman, L.E. *et. al.*, *J. Am. Chem. Soc.* **1997**, *119*, 7159-7160.

Synthesis of Epimeric Cyclization Precursors



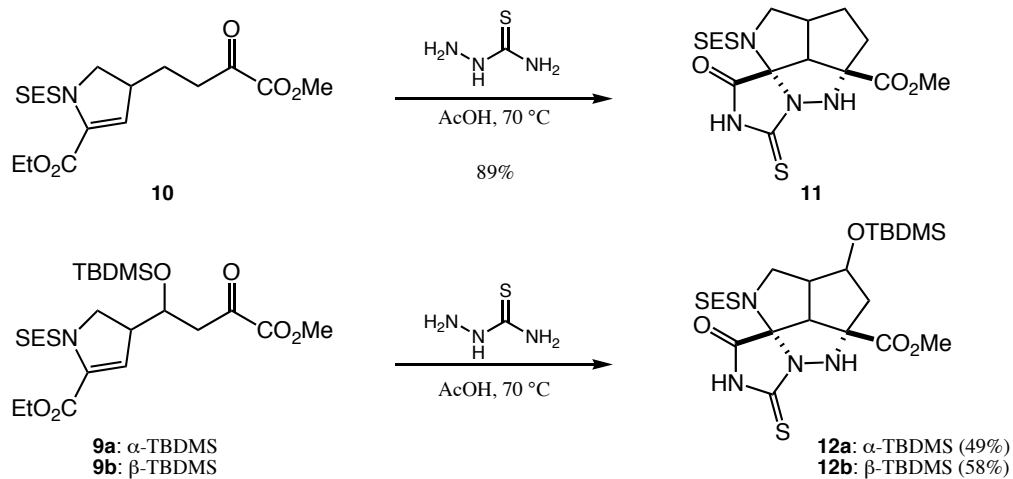
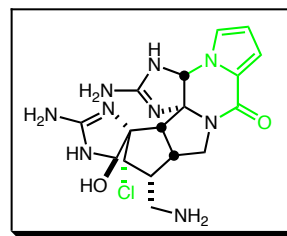
L. E. Overman *et al.* *J. Org. Chem.* **2002**, 67, 7880-7883.

Synthesis of Epimeric Cyclization Precursors



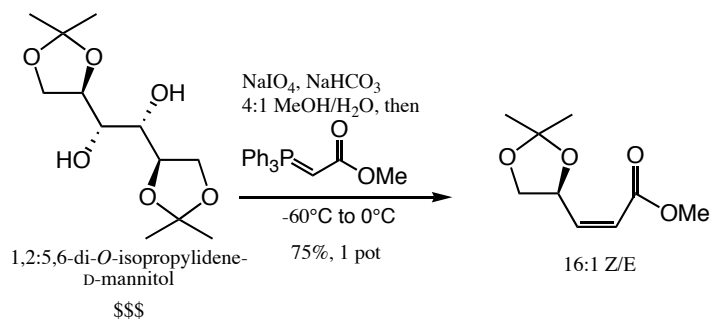
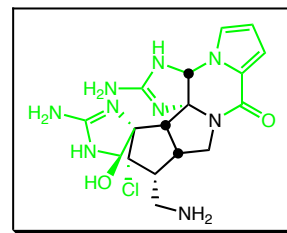
L. E. Overman *et al.* *J. Org. Chem.* **2002**, 67, 7880-7883.

Intramolecular Cycloaddition Reactions



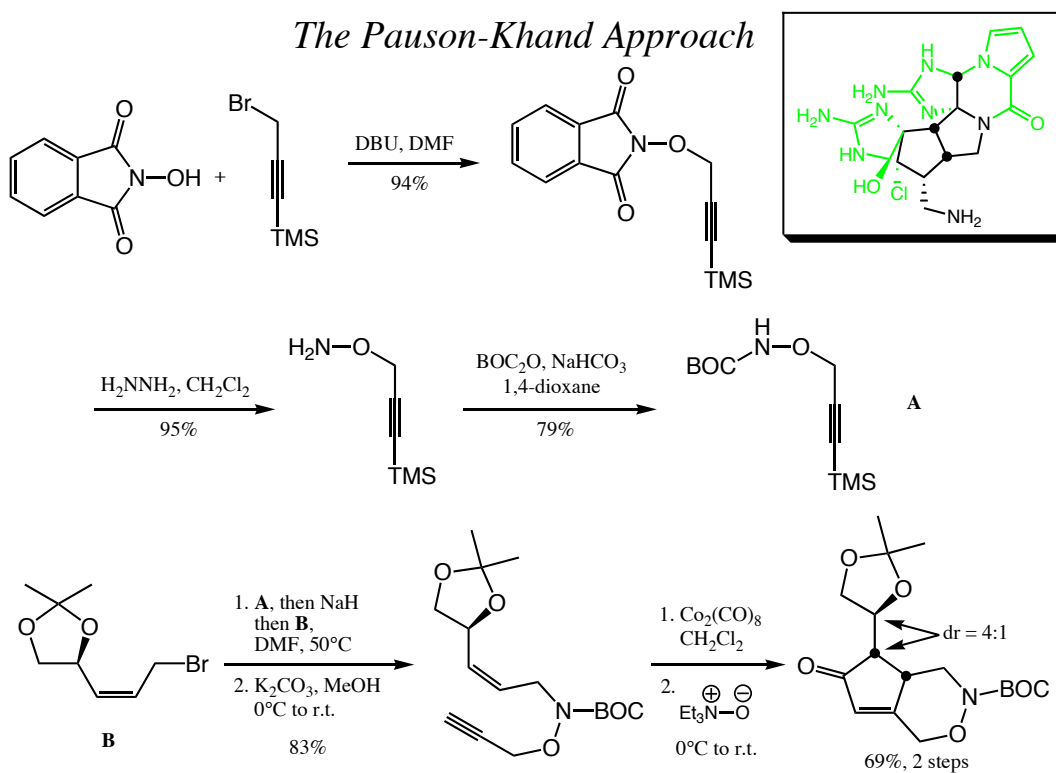
L. E. Overman *et al.* *J. Org. Chem.* **2002**, *67*, 7880-7883.

The Pauson-Khand Approach



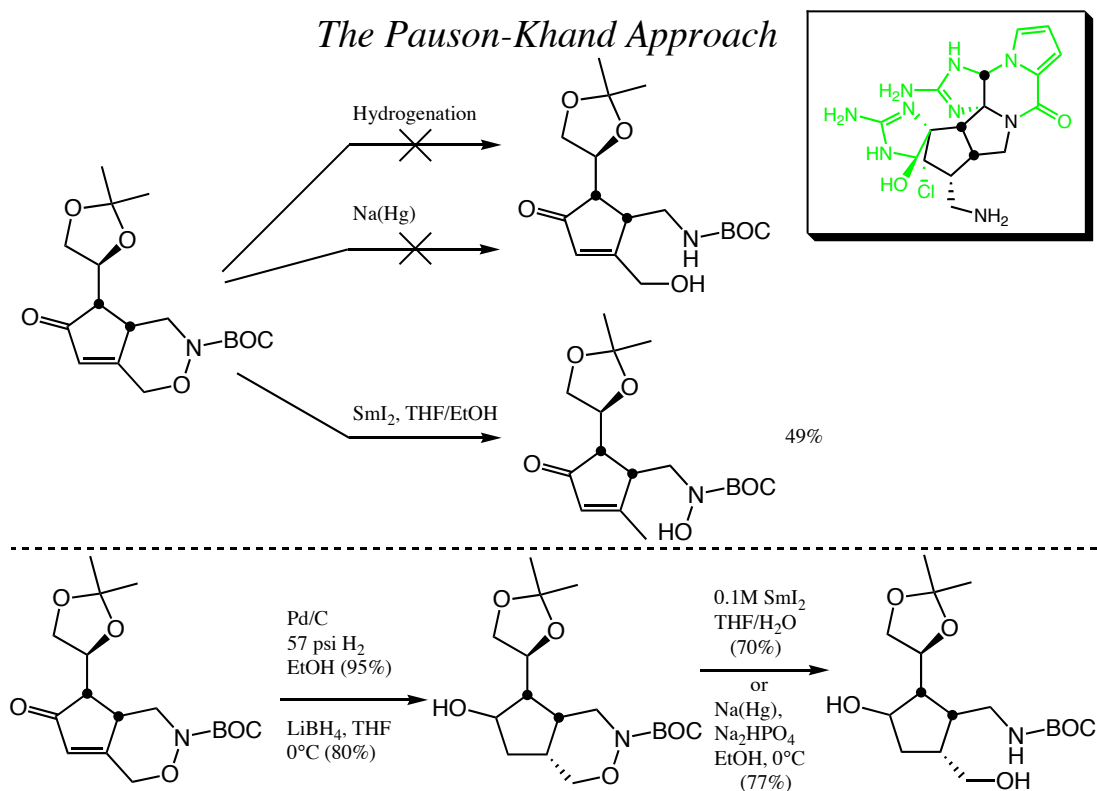
Austin, D. J., *et al.*, *Org. Lett.* **2003**, *5*, 2203-2206.

The Pauson-Khand Approach



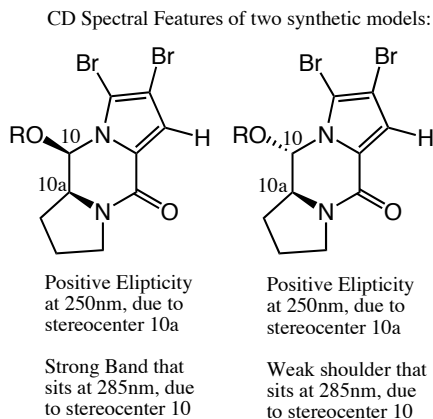
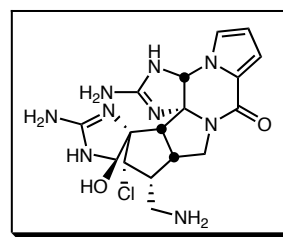
Austin, D. J., et al., *Org. Lett.* **2003**, 5, 2203-2206.

The Pauson-Khand Approach

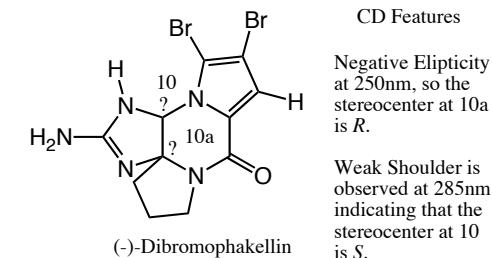


Austin, D. J., et al., *Org. Lett.* **2003**, 5, 2203-2206.

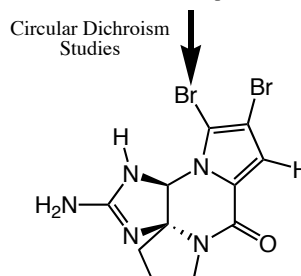
Studies on Absolute Configuration of a Pyrrolopyrazinone related to Palau'amine



Whether **R** is Ac, *R*-MTPA, *S*-MTPA or just H, the CD spectrum is virtually unchanged!



(-)-Dibromophakellin

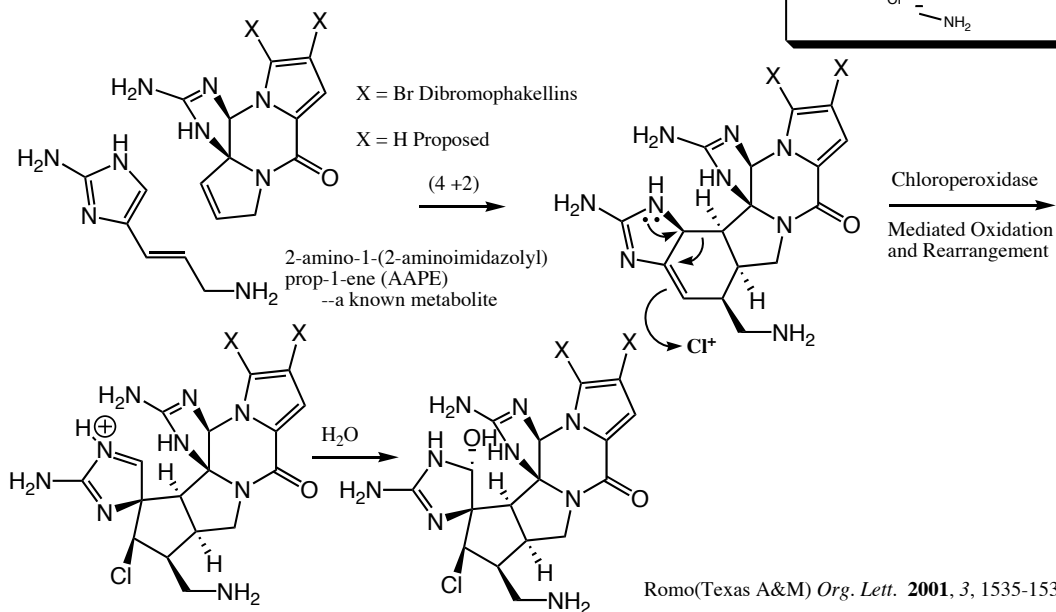


The authors are currently investigating the CD features of Palau'amine.

Lindel, T., et al., *Chem. Eur. J.* **2004**, *10*, 1141-1148.

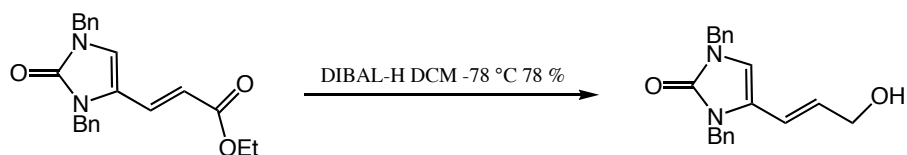
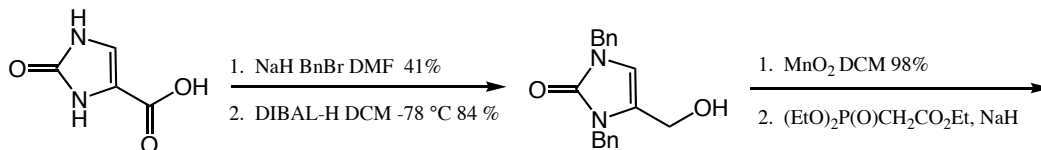
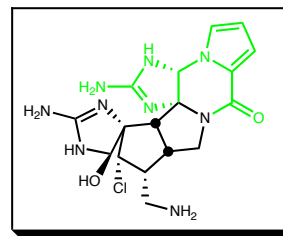
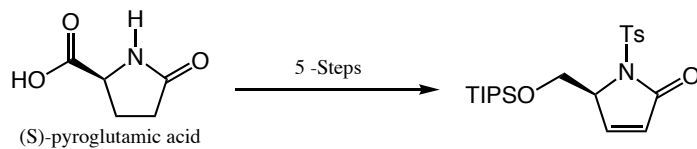
Another Biosynthetic Hypothesis Driven Synthetic Effort

The Hypothesis:

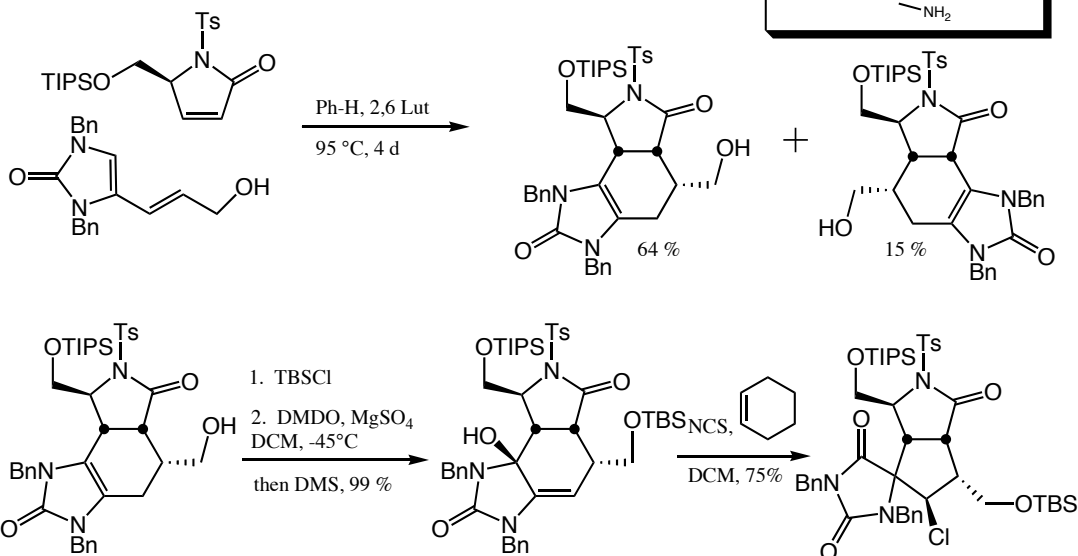
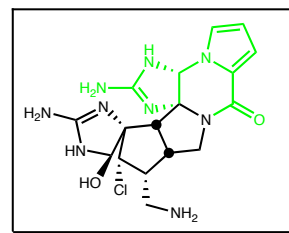


Romo(Texas A&M) *Org. Lett.* **2001**, *3*, 1535-1538

Building the Diels-Alder Fragments



Key Diels-Alder / Ring Contraction Sequence



Palau'amine Retrosynthetic Summary

